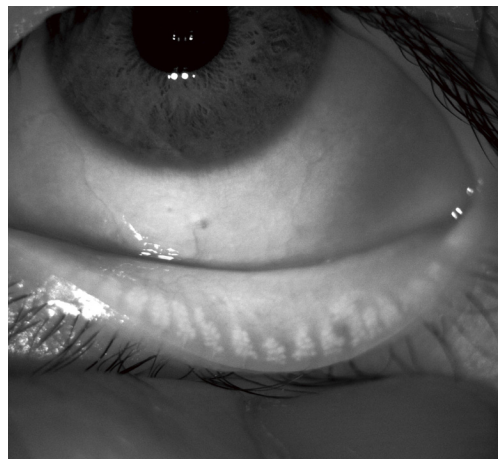
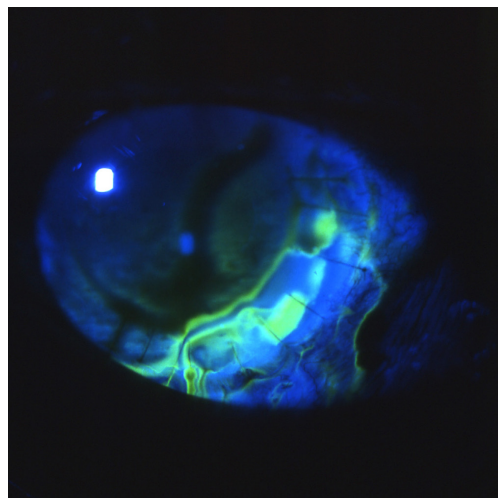
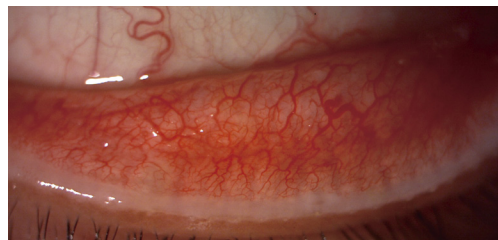
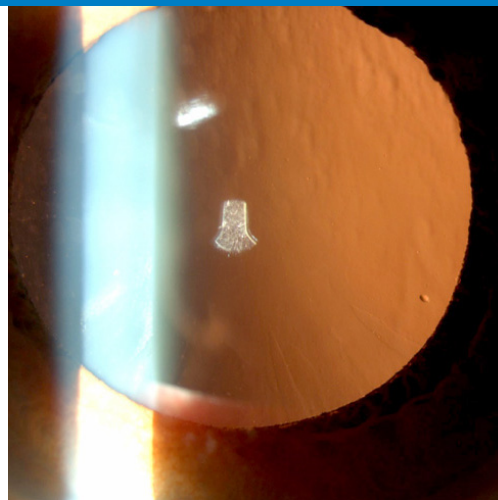


Slit Lamp Photography with Meibography Function





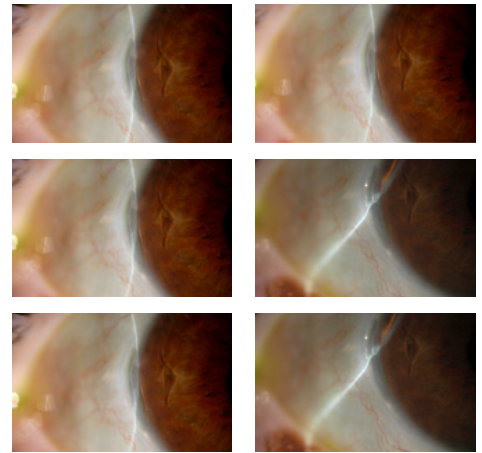
Meibomian Gland Observation

Meibomian gland observation and documentation is possible when using the optional BG-5 or BG-4M background illuminators.



Video Capability

The DC-4 allows for easy acquisition of video clips of the eye movements without interfering with the examination.



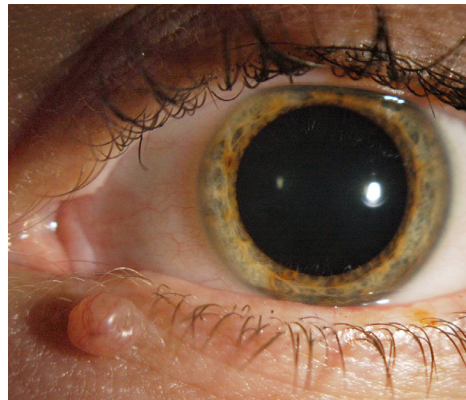
Smart Capture Function

With a simple push of the joystick trigger, the operator can obtain a rapid series of images that are quickly saved for later revision and selection. The Smart Capture function minimizes failed images or blurry pictures, especially in children and non-cooperative patients.



Live View

When using the EZ Capture™ software in conjunction with the DC-4, a real time live image will be seen on the monitor to facilitate centering and focusing. The live image can be used to show the eye condition to third party individuals for teaching and education. Sensitivity, shutter speed and white balance can be adjusted from the computer.



Still Image with Auto Exposure (AE) function

By adjusting the shutter speed and sensor gain, the brightness of the image will be automatically compensated. As a result, the live image used for alignment and the final picture will have the same color balance.

Metro 
Ophthalmic

732-727-0607
www.metroophthalmic.com



1. For meibomian gland observation, the following configuration is required:
SL-D7/SL-D8Z+DC-4+BG-4M or SL-D701+DC-4+BG-5.
2. Subject to change in design and/or specifications without advanced notice.
In order to obtain the best results with this instrument, please be sure to review all user instructions prior to operation.



TOPCON MEDICAL SYSTEMS, INC.

111 Bauer Drive, Oakland, NJ 07436

G: 800.223.1130 | P: 201.599.5100 | F: 201.599.5250 | topconmedical.com